

To achieve a flawless connection joint with MONTAPE®, every work step must be carried out precisely and accurately. For more information please visit our website: www.montape.com



1. Peel off the silicone foil from the underside of Montape®



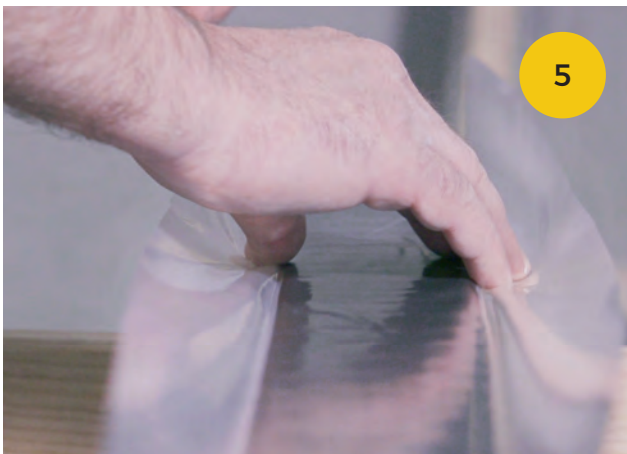
2. Place the sealing tape with the adhesive side centred onto C / U section



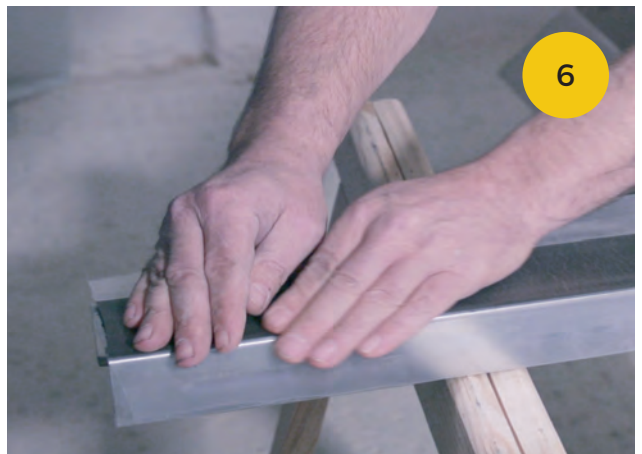
3. Affix evenly on the C / U section



4. Cut off Montape®



5. Unfold the Montape® dividing strips



6. Press down Montape® smoothly along the edges of the section

To achieve a flawless connection joint with MONTAPE®, every work step must be carried out precisely and accurately. For more information please visit our website: www.montape.com



7. Put the bonded C / U section onto the wall / ceiling / floor



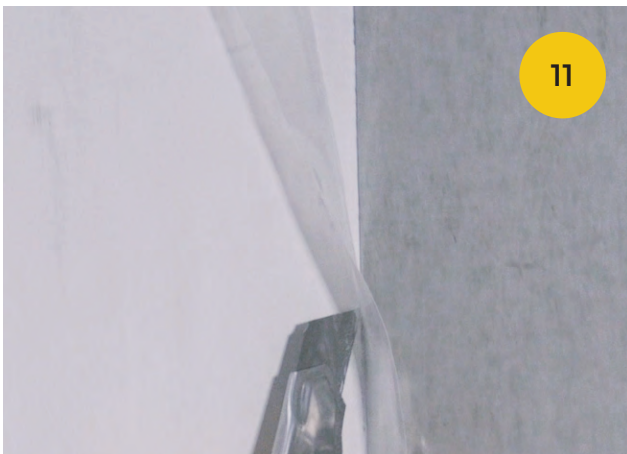
8. Fix the C / U section



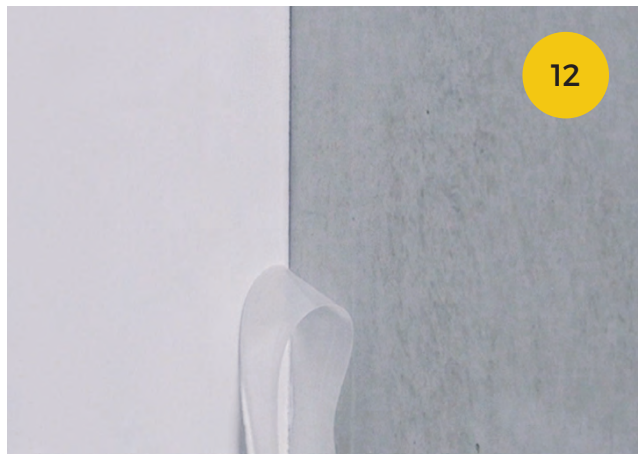
9. Mount the gypsum / fibreboard with at least 3-5 mm gap to the Montape® divider strips



10. Fill the joints professionally



11. Cut off the Montape® divider strips after completion of the filling work



12. Flawless vendor compliant connection joint